

151°15'0"E

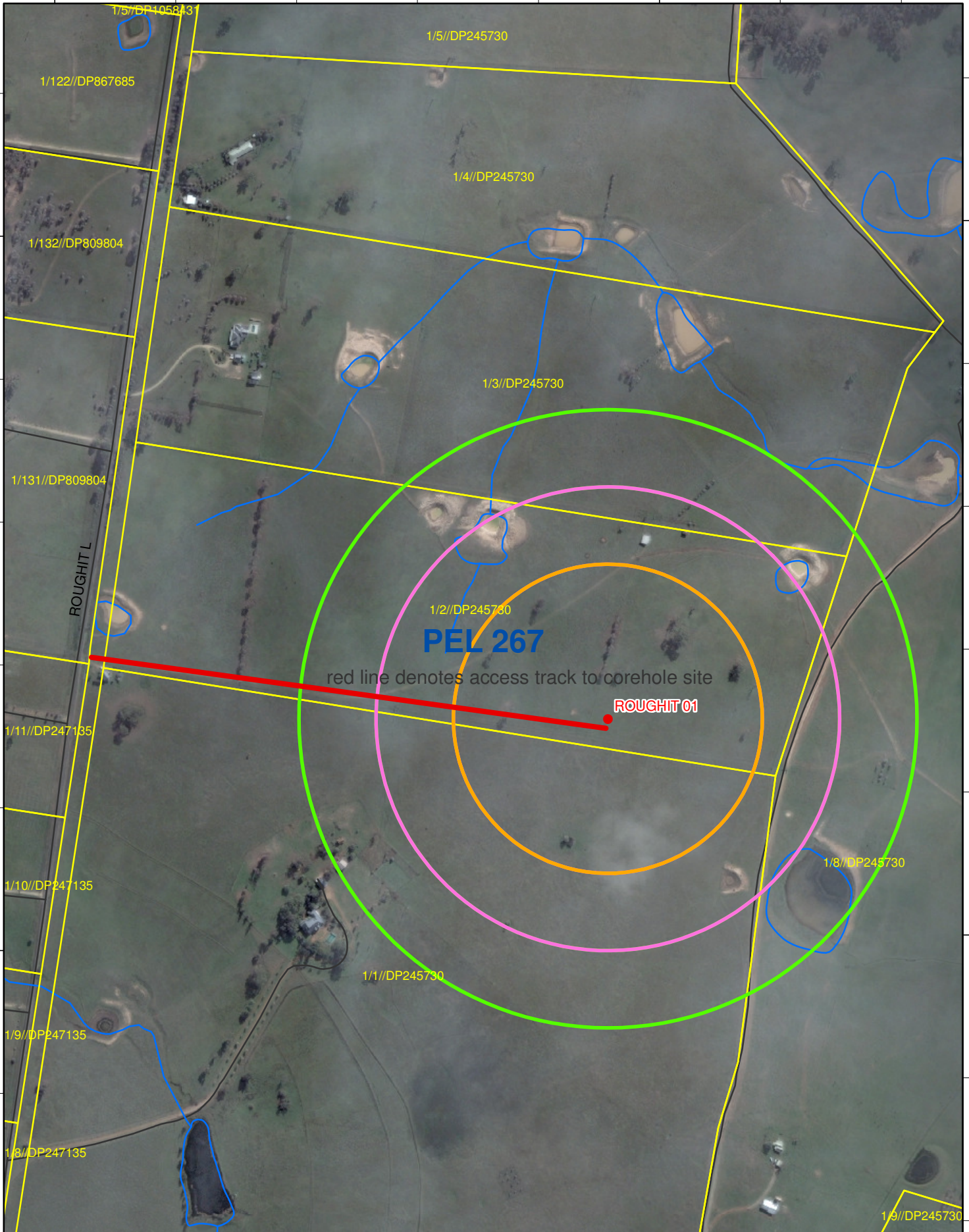
151°15'30"E

32°34'0"S

32°34'0"S

32°34'30"S

32°34'30"S



red line denotes access track to corehole site

**PEL 267**

**ROUGHIT 01**

151°15'0"E

(MGA 336432.621951, 6394774.712479)

151°15'30"E

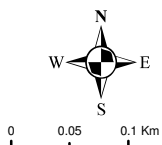
**sydneygas**

Author: S Garnett

Date: 17/03/2008

Map Ref: M161220

SCALE: 1:6,438



### Roughit 01

Please Note: aerial photographs are within +/- 30metres

SCHMATIC PLAN ONLY  
-SUBJECT TO SURVEY-  
FACILITY LOCATIONS MAY  
BE ADJUSTED ON FINAL

#### Legend

- Proposed corehole
  - Roads
  - DrainageLines
  - Cadastre
- | Buffer  |      |
|---|------|
| <span style="border: 2px solid orange; border-radius: 50%; width: 20px; height: 20px; display: inline-block;"></span> | 200m |
| <span style="border: 2px solid pink; border-radius: 50%; width: 20px; height: 20px; display: inline-block;"></span>   | 300m |
| <span style="border: 2px solid green; border-radius: 50%; width: 20px; height: 20px; display: inline-block;"></span>  | 400m |